

# Illinois Emergency Operations Plan

## Base Plan

### Appendix 3 – Mobile Support Teams

Illinois Emergency Management Agency

August 2021





Illinois Emergency Operations Plan (IEOP) – Base Plan, Appendix 3 - Mobile Support Teams  
Coordination and Management  
Dated August 2021

This page intentionally left blank



## Record of Changes

When changes are made to this document the following procedures will be followed:

- 1. Changes will be issued by the Interagency Strategic Planning Cell at IEMA and transmitted to agencies, personnel, and other designees specified by the IEMA Director or their designee.
  
- 2. When a change is made, an entry will be made in the following log:

CHANGE NUMBER	DATE ENTERED	PAGES OR SECTIONS CHANGED	ENTERED BY



Illinois Emergency Operations Plan (IEOP) – Base Plan, Appendix 3 - Mobile Support Teams  
Coordination and Management  
Dated August 2021

This page intentionally left blank



### **Appendix 3, Mobile Support Team (MST) – Coordination and Management**

Primary Agency: Illinois Emergency Management Agency (IEMA)

Support Agencies: General Requirements for Other State Agencies, Boards,  
Commissions and MST Activated through the State Emergency  
Operations Center (SEOC)

#### I. Concept of Operations

- A. State supported operations are scalable and modular based on the scope and magnitude of event, and ability of an Authority Having Jurisdiction (AHJ) to conduct operations.
- B. State utilization of MST is designed to augment efforts of the state and local governments and private sector organizations.
- C. The SEOC or designated state organizational element will provide technical and logistical assistance to activated or deployed MST.
- D. Personnel assigned to MST operations will be trained to the assigned mission and, to the extent possible, be made aware of potential risks involved.
- E. MST is responsible for training personnel in requirements and processes.
- F. The state will proactively move MST, appropriate to the event, to designated state field locations and Areas of Operation (AO).
- G. The state will use pre-identified and ad hoc locations for staging and sustainment of MST in support of operations.
- H. Procedures for utilization, control and use of MST will incorporate and/or consider operational priorities that include, but are not limited to the protection of life, public health and safety, property protection, environmental protection, restoration of essential utilities, restoration of essential program functions and coordination as appropriate.



Table 1 – SEOC Coordination and Management

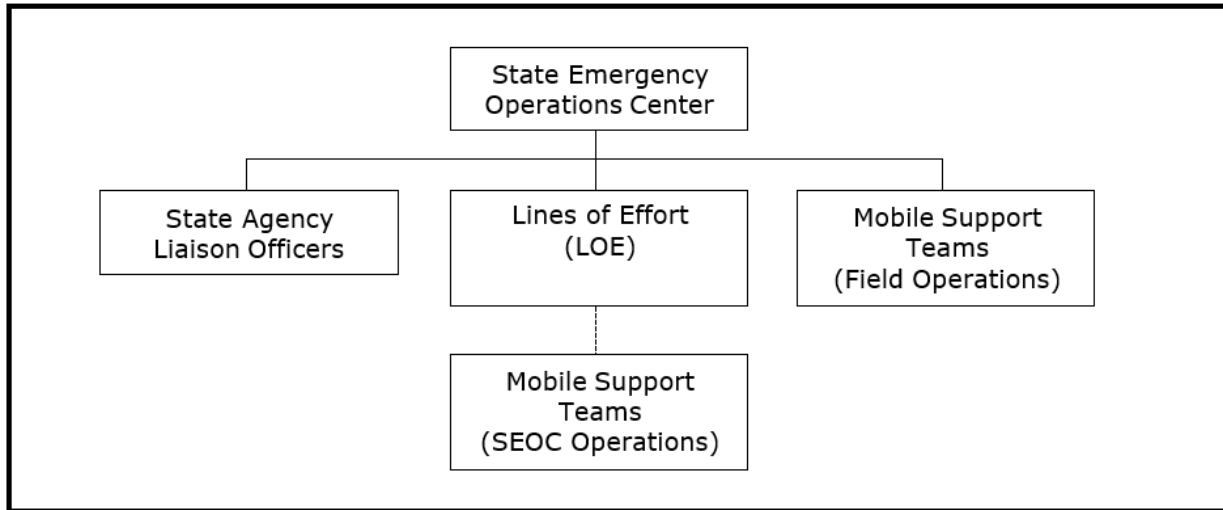


Table 2 – SEOC and State Unified Area Command (SUAC)

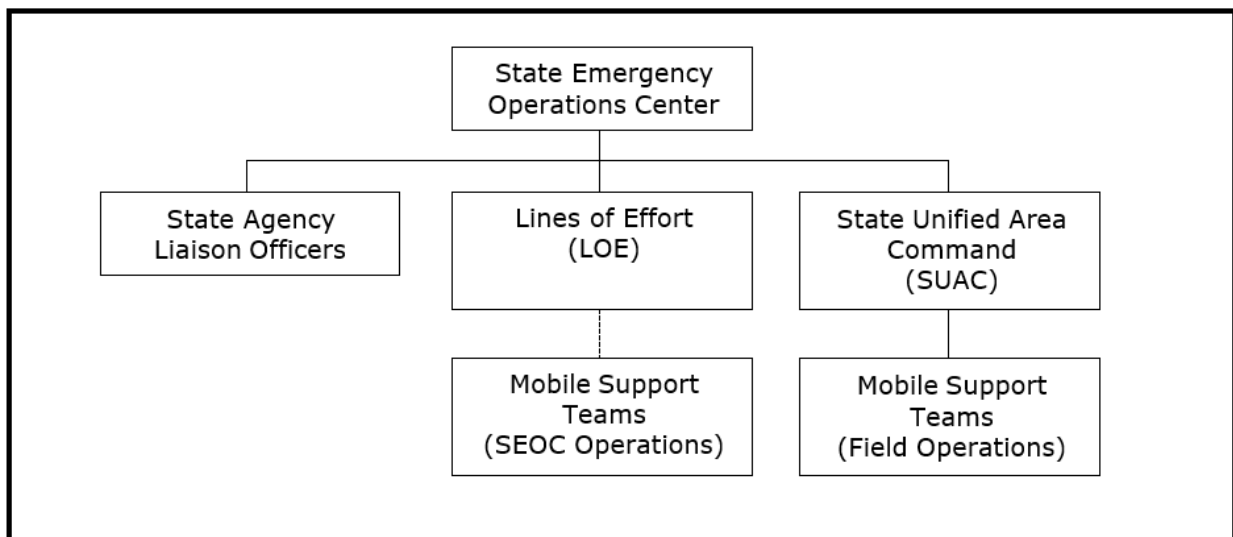
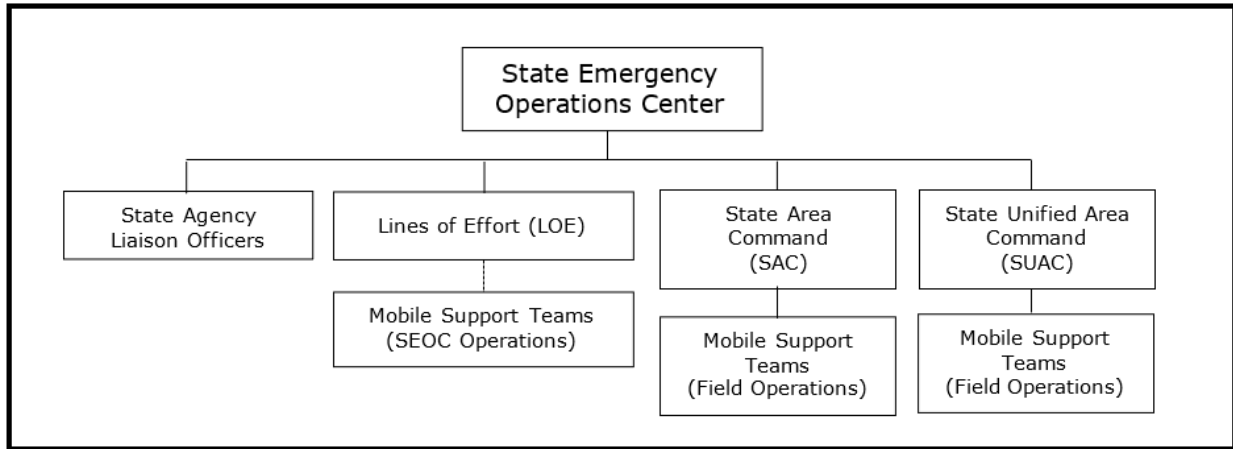




Table 3 – SEOC Expanded Operations SUAC and State Area Command (SAC)



## II. Authorities and References

### A. Authorities

1. Illinois Emergency Management Agency Act, 20 ILCS 3305, as amended.
2. Illinois Emergency Operating Plans and supportive documents, as amended.
3. Emergency Management Assistance Compact, 45 ILCS 151, as amended.

### B. References

1. None