



# IEMA-OHS

ILLINOIS EMERGENCY MANAGEMENT AGENCY  
AND OFFICE OF HOMELAND SECURITY

---

## 2023 Radiological Environmental Monitoring Report of the Honeywell Metropolis Works Facility



(This Page Intentionally Left Blank)

## Table of Contents

<u>Section Title</u>	<u>Page Number</u>
Executive Summary.....	4
Introduction.....	5
Site Description.....	5
Figure 1. Nuclear Fuel Cycle.....	5
IEMA-OHS Radiological Environmental Monitoring Program .....	6
Sampling and Monitoring Activities.....	6
Air Sampling .....	6
Soil Sampling .....	6
Sediment Sampling.....	7
Vegetation Sampling.....	7
Water Sampling.....	7
Direct Radiation Monitoring .....	7
Background Reference Areas .....	7
Sampling and Monitoring Adjustments .....	7
General Sampling and Monitoring Information .....	8
Laboratory Analysis .....	8
Gross Alpha / Beta Analysis.....	8
Isotopic Uranium Analysis .....	8
Ingrowth Analysis .....	8
Optically Stimulated Luminescence Analysis.....	9
Figure 2. Sources of Radiation Exposure to Man.....	10
Minimum Detectable Concentration (MDC) .....	10
Analysis Adjustments .....	10
Radiological Environmental Sampling and Monitoring Results.....	11
Air Sampling Results .....	11
Soil Sampling Results .....	11
Sediment Sampling Results.....	12
Vegetation Sampling Results .....	12
Water Sampling Results .....	12
Direct Radiation Monitoring Results .....	12
Results Interpretation or Limit Adjustments .....	13
Summary.....	13
Appendix A: Maps of Monitoring and Sampling Locations .....	14
Appendix B: Metropolis Sample Results .....	17
Appendix C: Background Location Sample Results.....	27

## Executive Summary

The Illinois Emergency Management Agency and Office of Homeland Security (IEMA-OHS) is mandated with protecting public health and safety and the environment from the potentially harmful effects of ionizing radiation. In support of that mission, IEMA-OHS conducts radiological environmental monitoring around the Honeywell Metropolis Works (HMW) facility near Metropolis, Illinois.

IEMA-OHS's radiological environmental monitoring program has three primary functions: 1) collection of diverse samples from carefully chosen locations on a routine basis, including simultaneous field surveillance; 2) analyzing samples for radionuclides; and 3) evaluation of test results on both an annual and historical basis.

The HMW facility is located on the peripheries of the town Metropolis, in Massac County, Illinois. The site consists of a 60 acre restricted area and a total of 1100 acres of land in Massac County. HMW started nuclear fuel cycle activities in 1958 and is the only facility in the United States that produces uranium hexafluoride (UF<sub>6</sub>).

Although the HMW facility is licensed by the US NRC, IEMA-OHS maintains a presence in the surrounding communities through its radiological environmental monitoring program. The overall purpose of IEMA-OHS's radiological environmental monitoring program, in relation to the HMW facility, is to determine the radiological environmental impact in the environs of the facility due to its operation, as well as determine long-term trends in environmental radiation levels.

In 2023, 298 environmental samples were collected and analyzed for radioactivity. The samples collected by IEMA-OHS included water, sediment, soil, air, and vegetation. In addition, 72 environmental dosimeters (Optically Stimulated Luminescence Dosimeters, or OSLs) were strategically deployed around the HMW facility to measure direct radiation.

Sampling and monitoring results collected as part of IEMA-OHS's HMW radiological environmental monitoring program indicate that radioactivity levels for most sampling types and locations remain consistent with historical data collected. As seen in previous years, results from sampling and monitoring locations found near the HMW facility indicate slightly elevated levels of radioactivity in the soil and air when compared to samples collected from greater distances away from the facility or from background reference areas. Similarly, direct radiation monitoring near the facility shows a slight increase in exposure in those areas when compared to other monitoring locations found away from the plant and background reference areas.

IEMA-OHS will continue to monitor the environs of, and evaluate its radiological environmental monitoring program for, the HMW facility to ensure that the site is performing as expected and that the citizens and environment of Illinois are protected from the potentially harmful effects of radioactive materials released from the facility.

*In 2023, sampling and monitoring results collected as part of IEMA-OHS's HMW radiological environmental monitoring program indicate that radioactivity levels remain consistent with data collected in previous years.*

## Introduction

The Illinois Emergency Management Agency and Office of Homeland Security (IEMA-OHS) is charged with protecting the citizens of Illinois from the potentially harmful effects of radioactive materials. In support of that mission, IEMA-OHS's Office of Nuclear Safety's Radiological Field Services Section (RFS) monitors the environment in Illinois for the presence of radionuclides through its radiological environmental monitoring program. This program has three primary functions: 1) collection of diverse samples from carefully chosen locations on a routine basis; 2) analyzing samples for radionuclides; and 3) evaluation of test results on both an annual and historical basis.

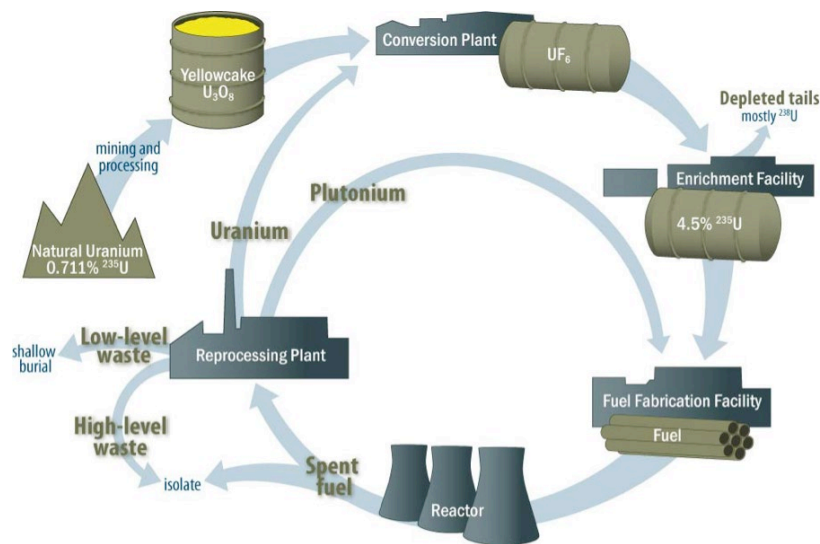
One of the locations monitored by IEMA-OHS is the environs of the Honeywell Metropolis Works (HMW) Facility near Metropolis, Illinois. The purpose of this report is to provide updated results of monitoring conducted during calendar year 2023.

## Site Description

Located on approximately 1,100 acres of land within Massac County and on the peripheries of Metropolis, Illinois, the HMW facility perimeter is formed by U.S. Highway 45 to the north, the Ohio River to the south, a coal terminal to the west, and the city of Metropolis to the east. The facility footprint and the land immediately surrounding the facility form a 60-acre restricted area as required by HMW's United States Nuclear Regulatory Commission's (US NRC) Radioactive Materials License, number SUB-526. This restricted area is intended for the protection of the public from exposure to radiation and radioactive materials.

Opened in 1958, the HMW, a subsidiary company of Honeywell International Inc., plays a crucial role in the nuclear fuel cycle by converting uranium ore ( $U_3O_8$ ) into uranium hexafluoride ( $UF_6$ ). HMW is unique in that it is the only facility in the United States that produces  $UF_6$ . As depicted in Figure 1, conversion is the second step in the nuclear fuel cycle immediately following mining and processing and preceding enrichment.

Figure 1. Nuclear Fuel Cycle



HMW uses a dry conversion process to convert  $U_3O_8$  to  $UF_6$ . The process first strips the  $U_3O_8$  of impurities such as sodium and potassium. The material is then treated with nitrogen to form  $UO_2$  and then hydrofluorinated with hydrofluoric acid to form uranium tetrafluoride ( $UF_4$ ). The  $UF_4$  is treated with fluorine gas to form  $UF_6$ . After HMW converts  $U_3O_8$  into  $UF_6$ , the  $UF_6$  is then processed, packaged and transported to enrichment plants, both domestic and foreign, where the  $UF_6$  is enriched either by gaseous diffusion or gas centrifugation. The enriched  $UF_6$  is then sent to fuel fabrication facilities and processed into fuel pellets for nuclear power plants.

In February of 2022, Honeywell announced that the plant was starting the process of going operational immediately, with the goal to be in production mode in early 2023. From March of 2018 to early 2023 the plant was in a ready-idle state. During the ready-idle state the plant conducted minimal operations and the amount of hazardous materials on site had been greatly reduced. Uranium ore continued to be received, sampled, assayed, and stored. Security was maintained and emergency response capabilities were commensurate with the hazards on site. The HMW plant was successfully restarted in July 2023.

Although the HMW facility is licensed by the US NRC, IEMA-OHS maintains a presence in the surrounding communities through its radiological environmental monitoring program. The overall purpose of IEMA-OHS's radiological environmental monitoring program, in relation to the HMW facility, is to determine the radiological environmental impact in the environs of the facility due to its operation, as well as determine long-term trends in environmental radiation levels.

## IEMA-OHS Radiological Environmental Monitoring Program

The IEMA-OHS radiological environmental monitoring program consists of sample collection and laboratory analysis, as well as review and analysis of the resulting data. As part of the 2023 HMW radiological environmental monitoring program, samples were collected from various locations around the HMW facility and the greater Metropolis area. Appendix A contains maps of the area around the HMW plant that indicate IEMA-OHS's sampling locations.

Sampling included water, vegetation, air, direct radiation, soil, and sediment. Analyses vary from media to media but focus primarily on natural uranium. A general description of sample collection, analysis, and results follows. Sample result tables are located in Appendix B and C.

## Sampling and Monitoring Activities

### Air Sampling

Air particulate samples are collected from a network of five strategically positioned environmental monitoring stations (EMS) within the environs of HMW. Each EMS is comprised of a continuous low-volume vacuum pump and air filter assembly. Particulate filter samples are exchanged and analyzed weekly.

### Soil Sampling

Soil samples are collected from four sampling locations during the second and third quarters of the year and analyzed for radionuclides that may have been transported from the environment and incorporated into the soil. Soil is sampled at a depth of six inches to monitor the migration of radionuclides away from the soil surface and at one inch to monitor for deposition of radionuclides on the soil surface.

## Sediment Sampling

Sediment samples are collected from two sampling locations during the second and third quarters of the year to determine whether contaminants previously in solution or suspension have settled out of a body of water and, therefore, cannot be identified through water sampling.

## Vegetation Sampling

Vegetation samples are collected from four sampling locations during the second and third quarters of the year and analyzed for radionuclides that may have been transported from the environment and incorporated into or on plant tissue.

## Water Sampling

Water samples are collected quarterly from five sampling locations and analyzed to ensure that radionuclides attributable to the HMW facility have not migrated into off-site water sources.

## Direct Radiation Monitoring

Unlike the environmental samples described above, dosimeters do not provide information on what radionuclides are found in the environment. Instead, dosimeters provide a direct measurement of the total dose produced by all sources of gamma radiation, including naturally occurring radionuclides and cosmic rays. A network of nineteen optically-stimulated luminescent dosimeters (OSLs) is arrayed around the HMW facility; dosimeters are exchanged and analyzed quarterly.

## Background Reference Areas

IEMA-OHS has established the environs of Sangchris Lake State Park, a cooling lake for a coal-fired power station near Kincaid, Illinois, as the background sampling and monitoring location for water, soil, sediment, and vegetation samples, as well as for direct radiation monitoring. Air monitoring stations in Springfield, Marion, and West Chicago, Illinois are used for background reference locations for air samples. To establish background radiation levels, samples are collected and analyzed utilizing the same procedures and methodologies used for the HMW samples.

In October of 2018, IEMA-OHS collected deposition and migration soil samples from ten locations in and around Massac County, in order to establish a background soil concentration that better represents the area. Results from these samples are used to determine analytical thresholds and for data comparison purposes. Results can be found in IEMA-OHS's 2018 Radiological Environmental Monitoring Report of the Honeywell Metropolis Works Facility Report.

Results for 2023 background samples can be found in Appendix C.

## Sampling and Monitoring Adjustments

No adjustments were made to the HMW sampling and monitoring plan in 2023.

## General Sampling and Monitoring Information

Every effort is made to collect all scheduled environmental samples; however, occasionally samples are unobtainable due to weather conditions, water levels, or obstructed access.

## Laboratory Analysis

Soil, sediment, vegetation, water, and air samples were analyzed by the IEMA-OHS Radiochemistry Laboratory located in Springfield, Illinois. The laboratory participates in semi-annual proficiency testing programs through Environmental Resource Associates, an accredited proficiency testing provider, and the Department of Energy (DOE) Radiological and Environmental Science Laboratory's Mixed Analyte Performance Evaluation Program (MAPEP). A general description of each analysis performed is provided below.

### Gross Alpha/Beta Analysis

Air particulate filters are exchanged and analyzed weekly for airborne radioactivity through gross alpha and beta analysis using a gas proportional counter. Since radionuclides associated with natural uranium emit either alpha or beta particles, analysis of air particulate samples for gross alpha/beta activity provides a good method of screening for the presence of radioactive materials.

Two "trigger" levels are used to determine if additional analysis is required for air particulate samples. These levels represent approximately 25% and 100% of the total uranium effluent concentration limit of 90 femtocurie per cubic meter (fCi/m<sup>3</sup>) established in 10 Code of Federal Regulation Part 20, Appendix B.

#### Gross Alpha Trigger Levels:

- Gross alpha results at or above 25 fCi/m<sup>3</sup> are evaluated to determine if isotopic uranium analysis will need to be performed.
- Samples with gross alpha results at or above 90 fCi/m<sup>3</sup> require isotopic uranium analysis.

### Isotopic Uranium Analysis

Isotopic uranium analysis via alpha spectroscopy is used to determine specific uranium-234 (U-234), uranium-235 (U-235), and uranium-238 (U-238) concentrations. Although more labor intensive, isotopic uranium analysis is capable of detecting much smaller concentrations and provides a more accurate representation of the concentration of uranium present within a sample compared to the past practice of using protactinium-234m (Pa-234m) as a surrogate for U-238 via gamma spectroscopy. All soil, vegetation, water, and sediment samples are analyzed using this method. If previously specified trigger levels are exceeded, air samples are also analyzed using this method.

### Ingrowth Analysis

Soil and sediment samples that exceed the Isotopic Uranium Action Level set by IEMA-OHS (see below) are sealed and stored for at least 28 days to allow for the ingrowth of daughter products and then reanalyzed to identify and quantify Radium-226 (Ra-226) and Thorium-230 (Th-230). Ingrowth analysis is conducted using a high-purity germanium detector in a process called gamma spectroscopy. Due to issues with sealing vegetation sample containers, vegetation samples are not currently submitted for ingrowth analysis.



### Isotopic Uranium Action Level:

The Isotopic Uranium Action Level is based on the results obtained from background samples collected in 2018 from several southern Illinois locations. The trigger limit has been set at 5 picocuries per gram (pCi/g) for combined (total) uranium (U-234 + U-235 + U-238) which is approximately twice the average isotopic uranium background level found in that area of the state.

Note: All soil samples taken from the Nearest Residence sample location are submitted for ingrowth analysis.

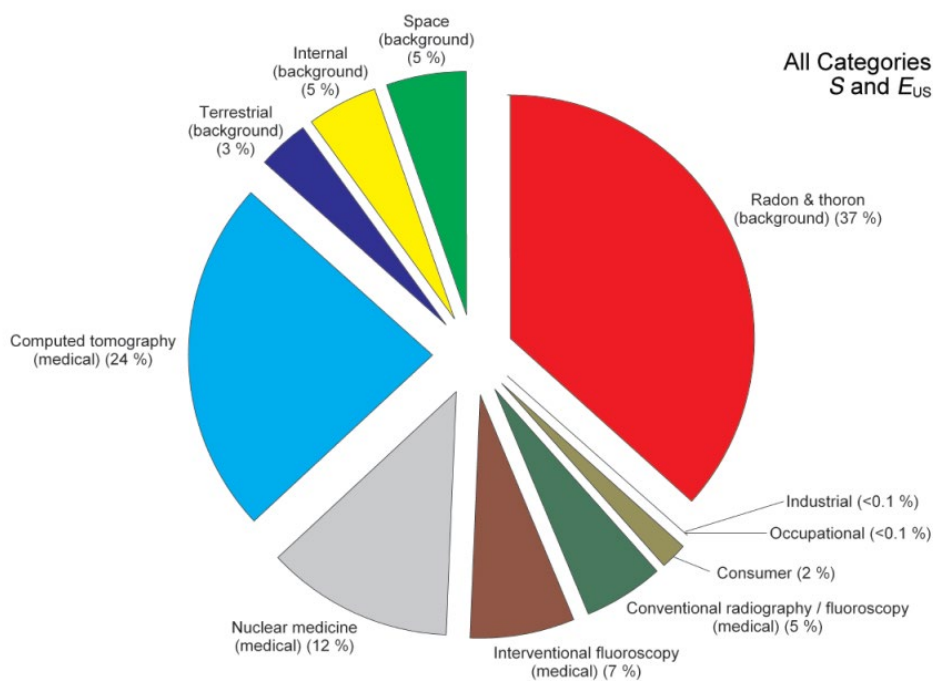
### Optically Stimulated Luminescence Analysis

OSL dosimeters provide a direct measurement of the total dose received from all sources of gamma radiation, including naturally occurring radionuclides and cosmic rays. The dosimeters are used to monitor for small changes in ambient background levels of gamma radiation that could result from releases of radioactive material or exposure to large quantities of stored material on site.

OSLs are analyzed by RFS staff using a Landauer In Light System Auto Reader. Results are expressed as the average milliroentgen (mR) per quarter and are also calculated to the approximate mR per year that would have been accrued by an individual at that location for an entire year.

The ambient gamma results can be compared to the average annual radiation exposure to an individual of 620 mR/year from various sources (according to the 2009 National Council on Radiation Protection's (NCRP) Report 160, see Figure 2). Approximately 8% (49.6 mR/year) of that exposure is from Terrestrial and Cosmic radiation (background radiation).

Figure 2. Sources of Radiation Exposure to Man



Reprinted with permission of the National Council on Radiation Protection and Measurements. (<http://NCRPpublications.org>)

### Minimum Detectable Concentration

All analytical methods have limitations: amounts that are too small to be detected. The Minimum Detectable Concentration (MDC) is an “a priori” measure of that limitation – an estimate of the lower limit of detection. It is defined as the smallest quantity that an analytical method has 95% likelihood of detecting. For example, if the MDC for the IEMA-OHS Radiochemistry Laboratory’s method for tritium in water is 200 picocuries per liter (pCi/L), given a sample with a tritium concentration of 200 pCi/L, we can expect to detect tritium approximately 95 times out of 100. Samples with less than 200 pCi/L could be detected, but with less certainty. Conversely, samples with more than 200 pCi/L would be more likely to be detected, approaching 100% as concentrations increase. Analytical methods are chosen, in part, on their MDC. As a general rule, methods are chosen such that their MDC is less than 10% of any applicable regulatory limit.

### Analysis Adjustments

No adjustments were made to the HMW laboratory analysis in 2023.

## Radiological Environmental Sampling and Monitoring Results

### Air Sampling Results

Air particulate sample results are compared to historical data collected from the environs of the HMW facility, and to sample data collected from the background reference locations. Results from each of the five air monitoring stations are displayed in Appendix B -Tables B.1 – B.5. Results for background location air sampling are located in Appendix C- Tables C1-C3.

Results are comparable to those obtained from background EMS locations in Marion, Springfield and West Chicago, Illinois, and are consistent with data previously collected by IEMA-OHS as part of its HMW radiological environmental monitoring program. All air particulate sample results for 2023 remain below the trigger levels established by IEMA-OHS.

### Soil Sampling Results

Soil sample results are compared to historical data collected from the environs of the HMW facility, sample data collected from the background reference location, and to sample data collected from soil sampling performed in October 2018 to establish an area wide background concentration level. The area wide average background concentration determined through isotopic uranium analysis is 1.00 pCi/g of U-234, 0.05 pCi/g of U-235, and 1.02 pCi/g of U-238. The average area wide background concentration determined via ingrowth analysis is 1.09 pCi/g of Ra-226 and below the established MDC for Th-230. Analytical results for soil samples collected in 2018 to establish an area wide background concentration level can be found in IEMA-OHS's 2018 Radiological Environmental Monitoring Report of the Honeywell Metropolis Works Facility Report.

Analytical results for isotopic uranium analysis of soil are shown in Appendix B- Table B.6 and B.7. Results for background location soil sampling are located in Appendix C- Tables C.4 and C.5. Analytical results for gamma spectroscopy analysis of soil are shown in Appendix B- Table B.8 and B.9. Results for background location soil sampling are located in Appendix C- Tables C.6 and C.7.

Isotopic uranium deposition and migration results for samples collected from the airport location were slightly higher than results from background samples collected and the results from the 2018 area-wide background sampling study. Results from this location were consistent with historical data collected.

Isotopic uranium deposition and migration results for samples collected from the intersection of Gurley and Devers sampling location were generally consistent with background sample results, 2018 area-wide background sampling results, and historical data.

Isotopic uranium deposition and migration results for samples collected from the Massac Creek location were generally lower than results from background samples collected and the results from the 2018 area-wide background sampling study. Deposition and migration results for samples collected from this location were consistent with historical data.

Isotopic uranium deposition and migration results for samples collected from the nearest residence location were higher than results from background samples collected and the results from the 2018 area-wide background sampling study. Results from this location were consistent with historical data collected.

Gamma spectroscopy results for soil deposition and soil migration samples after ingrowth of radioactive progeny are comparable to results obtained from the background sampling locations and are consistent with data previously collected by IEMA-OHS as part of its HMW radiological environmental monitoring program.

### Sediment Sampling Results

Sediment sample results are compared to historical data collected from the environs of the HMW facility, and to sample data collected from the background reference location. Analytical results are shown in Appendix B- Table B.10. Results for background location sediment sampling are located in Appendix C- Table C.8.

Results are consistent with results obtained from the background samples collected from the West Boat Ramp in Kincaid, IL and to historical data collected. Results for samples collected from the Strawkaws Boat Ramp in Kincaid, IL are consistently lower than results from the West Boat Ramp and those collected in the environs of HMW.

### Vegetation Sampling Results

Vegetation sample results are compared to historical data collected from the environs of the HMW facility, and to sample data collected from the background reference location. Historical data for isotopic uranium results of vegetation during operational period is unavailable. Isotopic uranium analysis of vegetation started in 2018 and HMW was in ready-idle state from March of 2018 to early 2023. Analytical results are shown in Appendix B- Table B.11. Results for background location vegetation sampling are located in Appendix C- Tables C.9.

Isotopic uranium results for the vegetation sample collected from Massac Creek @ Country Club Rd on 8/18/2023 were above background and historical data collected. IEMA-OHS will continue to sample, monitor, and track results from this location.

Isotopic uranium results for the vegetation samples collected from Nearest residence on 5/30/2023 and 8/18/2023 were both above background and historical data collected. IEMA-OHS will continue to sample, monitor, and track results from this location.

All other results are consistent with results obtained from the background sampling locations and to historical data collected.

### Water Sampling Results

Water sample results are compared to historical data collected from the environs of the HMW facility, and to sample data collected from the background reference location. Analytical results for water samples are displayed in Appendix B- Table B.12. Results for background location water sampling are located in Appendix C- Tables C.10.

Results are consistent with results obtained from the background sampling locations and to historical data collected.

### Direct Radiation Monitoring Results

OSL results are compared to historical data collected from the environs of the HMW facility, and to sample data collected from the background reference location. Analytical results are displayed in Appendix B- Table B.13. Results for background location direct radiation monitoring are located in Appendix C- Tables C.11.

Results are consistent with results obtained from the background sampling locations and to historical data collected.

### Results Interpretation or Limit Adjustments

No result interpretations or limit adjustments were made to the HMW result's analysis in 2023.

### Summary

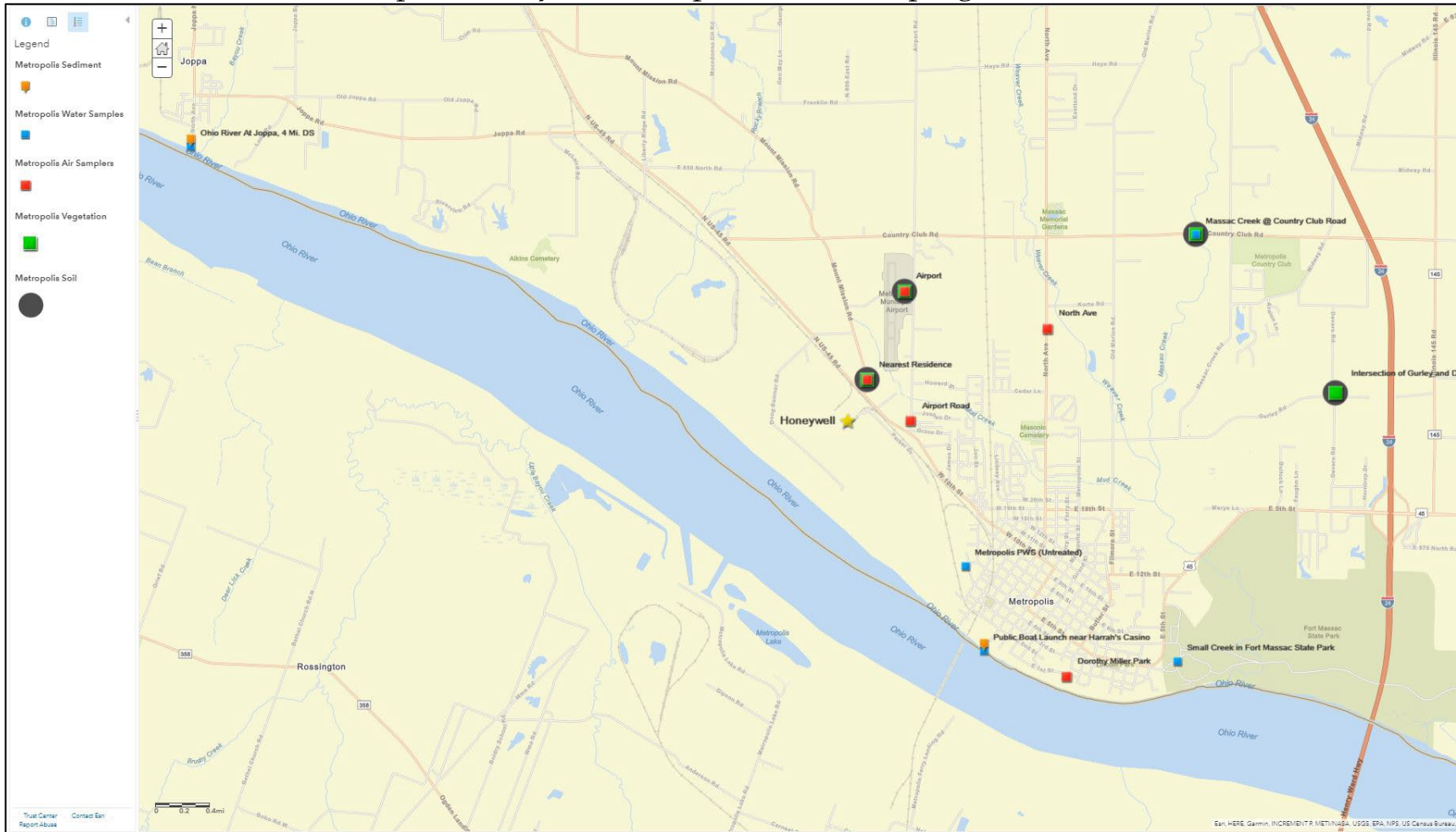
Sampling and monitoring results collected as part of IEMA-OHS's HMW radiological environmental monitoring program indicate that radioactivity levels remain consistent with data collected in previous years.

As seen in previous years, results from sampling and monitoring locations found near the HMW facility indicate slightly elevated levels of radioactivity in the soil and air when compared to samples collected from greater distances away from the facility or from background reference areas. Similarly, direct radiation monitoring near the facility shows a slight increase in exposure in those areas when compared to other monitoring locations found away from the plant and background reference areas.

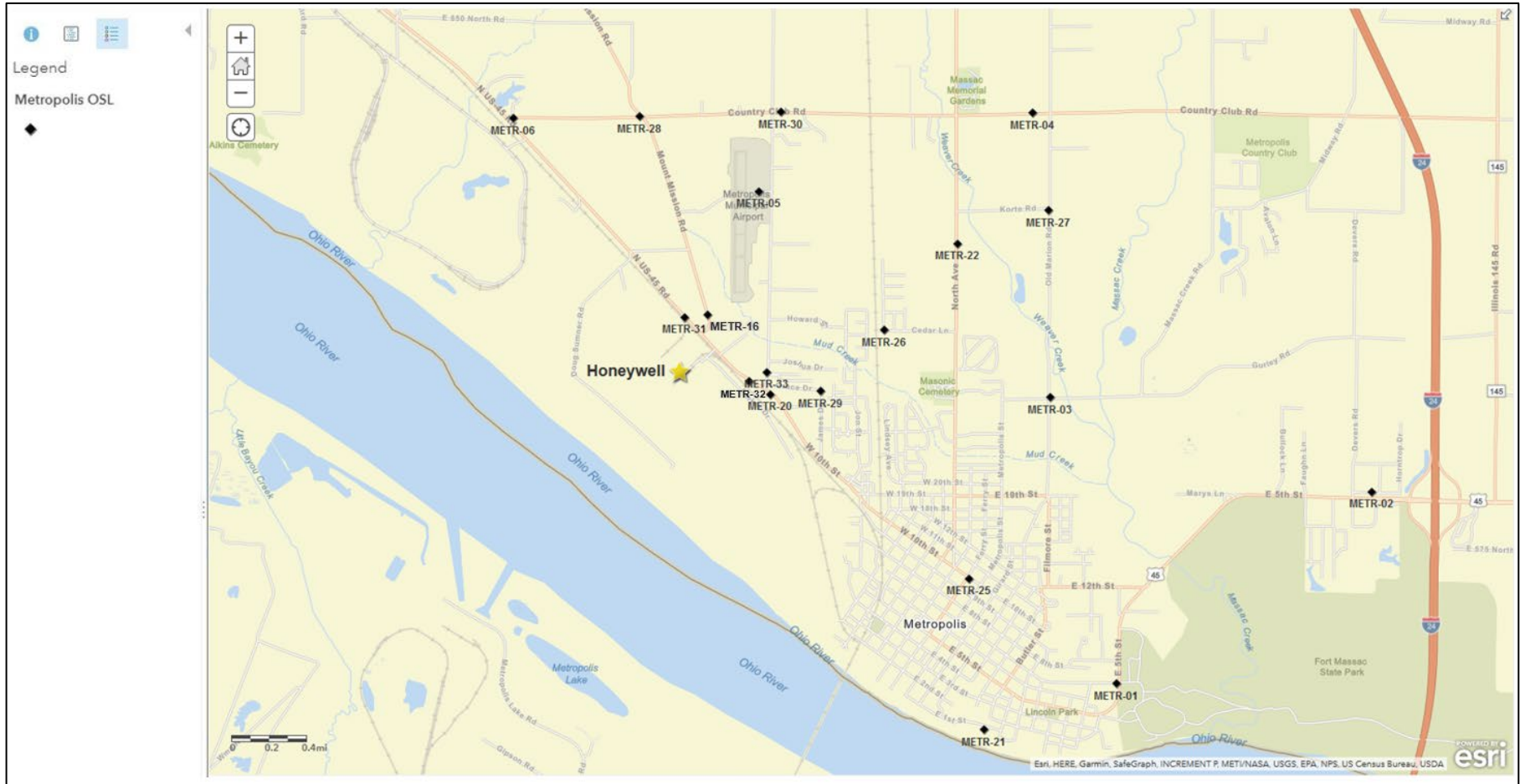
# APPENDIX A

## Maps of Monitoring and Sampling Locations

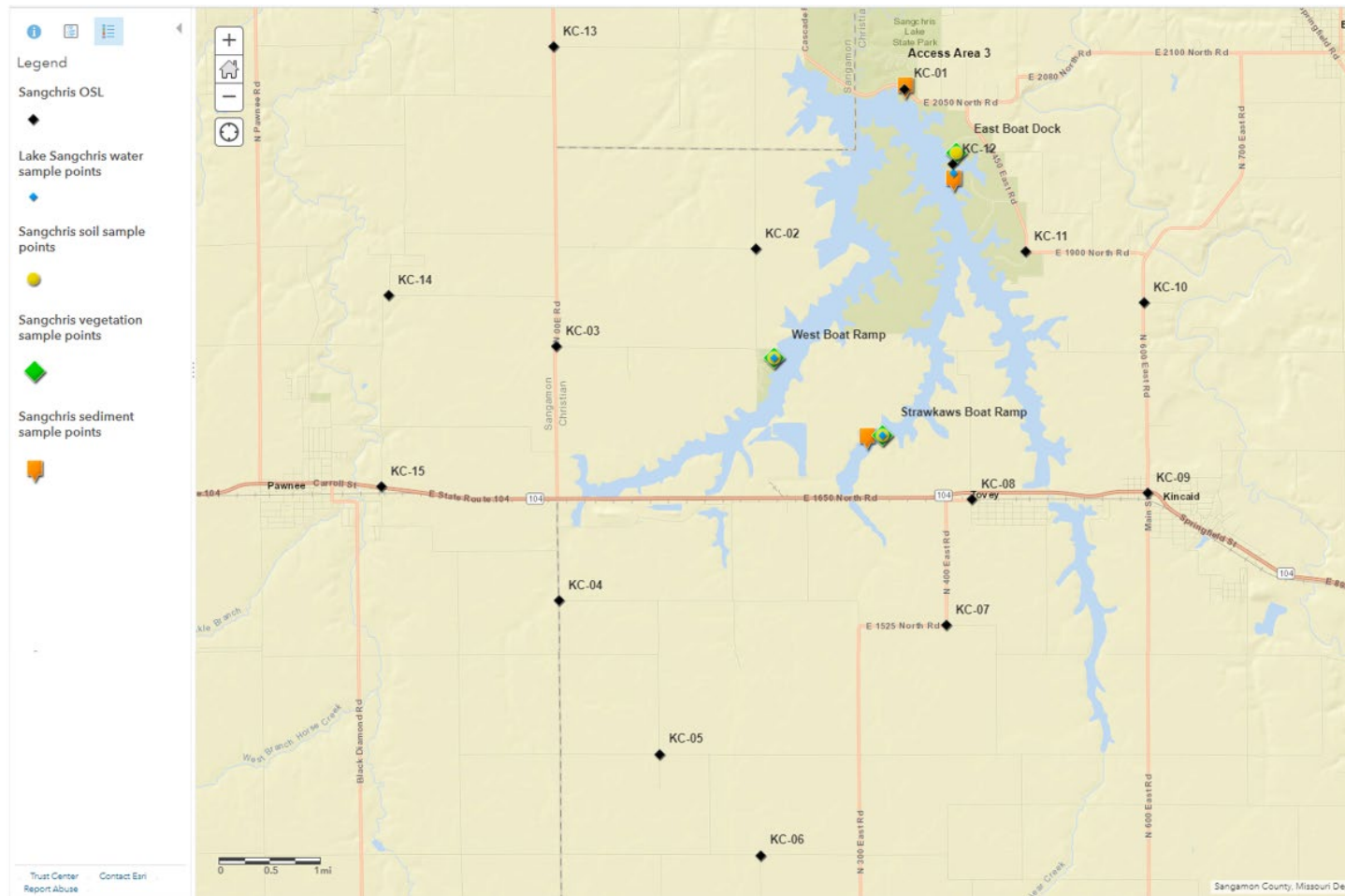
### Map A.1. Honeywell Metropolis Works Sampling Locations



Map A.2. Honeywell Metropolis Works Optically Stimulated Luminescence Monitoring Locations



Map A.3. Background Reference Sampling Locations: Sangchris Lake State Park near Kincaid, Illinois





## APPENDIX B

### Sample Analysis Results for Samples Collected from the Environs of the HMW Facility

Table B.1 Sample Results for Alpha / Beta Screening of Air Particulate Filters  
Nearest Residence  
Results are in femtocuries per cubic meter (fCi/m<sup>3</sup>)

Location	Alpha		Beta		Location	Alpha		Beta	
Date	Result	MDC	Result	MDC	Date	Result	MDC	Result	MDC
<b>Nearest Residence</b>					<b>Nearest Residence</b>				
1/3/2023	4.2	1.8	23.9	3.3	7/11/2023	5.1	1.8	23.5	3.3
1/10/2023	7.4	1.8	24.2	3.3	7/18/2023	8.5	1.8	31.9	3.3
1/17/2023	5.3	1.8	30.3	3.3	7/25/2023	4.9	1.8	22.8	3.3
1/24/2023	2.8	1.8	21.2	3.3	8/1/2023	12.2	1.8	36.9	3.3
1/31/2023	2.3	1.8	18.6	3.3	8/8/2023	7.3	1.8	24.1	3.3
2/7/2023	4.2	1.8	28.6	3.3	8/15/2023	7.3	1.8	22.4	3.3
2/14/2023	2.6	1.8	21.3	3.3	8/22/2023	2.6	1.8	33.2	3.3
2/21/2023	2.4	1.8	19.4	3.3	8/29/2023	2.4	1.8	53.7	3.3
2/27/2023	<MDC	1.8	16.7	3.3	9/2/2023	3.0	1.8	30.5	3.3
3/6/2023	2.1	1.8	20.5	3.3	9/12/2023	5.0	1.8	24.8	3.3
3/13/2023	<MDC	1.8	15.7	3.3	9/19/2023	5.1	1.8	40.4	3.3
3/21/2023	3.8	1.8	18.8	3.3	9/26/2023	8.2	1.8	52.9	3.3
4/3/2023	1.8	1.8	19.8	3.3	10/3/2023	8.7	1.8	52.1	3.3
4/10/2023	2.6	1.8	21.9	3.3	10/10/2023	5.3	1.8	32.0	3.3
4/17/2023	2.4	1.8	18.4	3.3	10/17/2023	6.3	1.8	33.7	3.3
4/25/2023	4.0	1.8	18.6	3.3	10/24/2023	5.5	1.8	37.2	3.3
5/1/2023	2.2	1.8	23.7	3.3	10/31/2023	4.9	1.8	26.3	3.3
5/8/2023	<MDC	1.8	15.7	3.3	11/7/2023	9.5	1.8	56.1	3.3
5/15/2023	1.8	1.8	15.0	3.3	11/14/2023	4.5	1.8	32.8	3.3
5/22/2023	3.2	1.8	18.3	3.3	11/21/2023	3.5	1.8	38.4	3.3
5/30/2023	3.1	1.8	23.7	3.3	11/28/2023	3.6	1.8	39.9	3.3
6/5/2023	4.1	1.8	30.6	3.3	12/5/2023	13.0	1.8	45.5	3.3
6/12/2023	2.7	1.8	25.3	3.3	12/12/2023	13.2	1.8	41.0	3.3
6/20/2023	4.9	1.8	23.5	3.3	12/19/2023	7.5	1.8	33.6	3.3
6/27/2023	3.3	1.8	20.4	3.3	12/26/2023	8.2	1.8	35.4	3.3
7/4/2023	6.8	1.8	20.6	3.3					

Table B.2 Sample Results for Alpha / Beta Screening of Air Particulate Filters  
Metropolis Airport  
Results are in femtocuries per cubic meter (fCi/m<sup>3</sup>)

Location	Alpha		Beta		Location	Alpha		Beta	
Date	Result	MDC	Result	MDC	Date	Result	MDC	Result	MDC
<b>Airport 1 Mi. NNE</b>					<b>Airport 1 Mi. NNE</b>				
1/3/2023	3.6	1.8	21.7	3.3	7/11/2023	4.2	1.8	21.3	3.3
1/10/2023	5.4	1.8	22.3	3.3	7/18/2023	3.4	1.8	20.3	3.3
1/17/2023	4.5	1.8	33.2	3.3	7/25/2023	2.2	1.8	19.0	3.3
1/24/2023	2.7	1.8	21.9	3.3	8/1/2023	7.3	1.8	28.5	3.3
1/31/2023	2.3	1.8	17.5	3.3	8/8/2023	4.8	1.8	18.1	3.3
2/7/2023	3.3	1.8	28.8	3.3	8/15/2023	4.2	1.8	19.3	3.3
2/14/2023	2.6	1.8	23.7	3.3	8/22/2023	1.8	1.8	27.6	3.3
2/21/2023	<MDC	1.8	19.9	3.3	8/29/2023	2.2	1.8	53.1	3.3
2/27/2023	<MDC	1.8	18.4	3.3	9/2/2023	2.3	1.8	26.6	3.3
3/6/2023	<MDC	1.8	20.0	3.3	9/12/2023	3.2	1.8	21.2	3.3
3/13/2023	<MDC	1.8	14.4	3.3	9/19/2023	4.9	1.8	34.8	3.3
3/21/2023	2.8	1.8	23.0	3.3	9/26/2023	6.2	1.8	43.5	3.3
4/3/2023	<MDC	1.8	21.3	3.3	10/3/2023	8.1	1.8	46.4	3.3
4/10/2023	<MDC	1.8	22.4	3.3	10/10/2023	4.5	1.8	28.1	3.3
4/17/2023	2.4	1.8	20.3	3.3	10/17/2023	3.6	1.8	27.3	3.3
4/25/2023	2.2	1.8	17.4	3.3	10/24/2023	3.5	1.8	34.2	3.3
5/1/2023	<MDC	1.8	24.4	3.3	10/31/2023	<MDC	1.8	21.4	3.3
5/8/2023	<MDC	1.8	17.8	3.3	11/7/2023	5.3	1.8	42.7	3.3
5/15/2023	2.5	3.6	31.8	6.5	11/14/2023	3.0	1.8	30.2	3.3
5/22/2023	3.1	1.8	19.7	3.3	11/21/2023	2.9	1.8	34.4	3.3
5/30/2023	2.7	1.8	26.2	3.3	11/28/2023	<MDC	1.8	35.3	3.3
6/5/2023	2.3	1.8	26.5	3.3	12/5/2023	8.9	1.8	37.8	3.3
6/12/2023	<MDC	1.8	24.8	3.3	12/12/2023	7.6	1.8	32.7	3.3
6/20/2023	2.4	1.8	19.3	3.3	12/19/2023	6.2	1.8	31.7	3.3
6/27/2023	4.6	1.8	23.6	3.3	12/26/2023	4.8	1.8	30.0	3.3
7/4/2023	5.3	1.8	20.4	3.3					

Table B.3 Sample Results for Alpha / Beta Screening of Air Particulate Filters  
 North Avenue  
 Results are in femtocuries per cubic meter (fCi/m<sup>3</sup>)

Location	Alpha		Beta		Location	Alpha		Beta	
Date	Result	MDC	Result	MDC	Date	Result	MDC	Result	MDC
<b>Fire Station North Ave</b>					<b>Fire Station North Ave</b>				
1/3/2023	3.5	1.8	23.6	3.3	7/11/2023	4.8	1.8	22.9	3.3
1/10/2023	3.7	1.8	21.2	3.3	7/18/2023	3.2	1.8	22.4	3.3
1/17/2023	5.5	1.8	29.3	3.3	7/25/2023	3.8	1.8	20.8	3.3
1/24/2023	4.0	1.8	23.3	3.3	8/1/2023	7.2	1.8	30.9	3.3
1/31/2023	<MDC	1.8	16.0	3.3	8/8/2023	5.2	1.8	22.0	3.3
2/7/2023	3.3	1.8	27.7	3.3	8/15/2023	5.5	1.8	23.6	3.3
2/14/2023	1.9	1.8	21.5	3.3	8/22/2023	2.1	1.8	33.0	3.3
2/21/2023	<MDC	1.8	20.4	3.3	8/29/2023	3.2	1.8	56.5	3.3
2/27/2023	<MDC	1.8	17.6	3.3	9/2/2023	<MDC	1.8	27.9	3.3
3/6/2023	<MDC	1.8	19.6	3.3	9/12/2023	3.9	1.8	22.6	3.3
3/13/2023	2.1	1.8	17.9	3.3	9/19/2023	6.7	1.8	40.8	3.3
3/21/2023	3.1	1.8	20.1	3.3	9/26/2023	7.6	1.8	52.7	3.3
4/3/2023	<MDC	1.8	20.1	3.3	10/3/2023	8.1	1.8	48.8	3.3
4/10/2023	1.9	1.8	24.4	3.3	10/10/2023	5.4	1.8	33.5	3.3
4/17/2023	2.8	1.8	17.9	3.3	10/17/2023	4.0	1.8	35.6	3.3
4/25/2023	2.0	1.8	19.2	3.3	10/24/2023	4.6	1.8	41.5	3.3
5/1/2023	<MDC	1.8	23.0	3.3	10/31/2023	<MDC	1.8	23.9	3.3
5/8/2023	<MDC	1.8	16.1	3.3	11/7/2023	5.5	1.8	43.9	3.3
5/15/2023	2.3	1.8	16.5	3.3	11/14/2023	3.8	1.8	32.6	3.3
5/22/2023	2.2	1.8	18.4	3.3	11/21/2023	2.6	1.8	38.9	3.3
5/30/2023	2.4	1.8	25.3	3.3	11/28/2023	2.8	1.8	41.6	3.3
6/5/2023	<MDC	1.8	28.3	3.3	12/5/2023	10.1	1.8	45.4	3.3
6/12/2023	2.2	1.8	25.3	3.3	12/12/2023	8.4	1.8	35.4	3.3
6/20/2023	2.8	1.8	24.5	3.3	12/19/2023	6.2	1.8	32.5	3.3
6/27/2023	4.9	1.8	21.3	3.3	12/26/2023	5.6	1.8	34.8	3.3
7/4/2023	5.7	1.8	20.0	3.3					

Table B.4 Sample Results for Alpha / Beta Screening of Air Particulate Filters  
 Dorothy Miller Park  
 Results are in femtocuries per cubic meter (fCi/m<sup>3</sup>)

Location	Alpha		Beta		Location	Alpha		Beta	
Date	Result	MDC	Result	MDC	Date	Result	MDC	Result	MDC
<b>Dorothy Miller Park</b>					<b>Dorothy Miller Park</b>				
1/3/2023	4.3	1.8	24.5	3.3	7/11/2023	5.4	1.8	17.5	3.3
1/10/2023	4.0	1.8	22.8	3.3	7/18/2023	3.3	1.8	21.3	3.3
1/17/2023	5.0	1.8	29.9	3.3	7/25/2023	2.0	1.8	19.0	3.3
1/24/2023	3.7	1.8	22.2	3.3	8/1/2023	6.8	1.8	29.2	3.3
1/31/2023	2.0	1.8	17.5	3.3	8/8/2023	5.8	1.8	20.1	3.3
2/7/2023	3.4	1.8	30.3	3.3	8/15/2023	3.9	1.8	14.9	3.3
2/14/2023	2.2	1.8	23.4	3.3	8/22/2023	3.4	1.8	33.5	3.3
2/21/2023	<MDC	1.8	19.4	3.3	8/29/2023	2.8	1.8	50.9	3.3
2/27/2023	<MDC	1.8	14.3	3.3	9/2/2023	<MDC	1.8	28.2	3.3
3/6/2023	<MDC	1.8	20.2	3.3	9/12/2023	3.8	1.8	21.5	3.3
3/13/2023	2.2	1.8	15.7	3.3	9/19/2023	6.1	1.8	38.4	3.3
3/21/2023	2.5	1.8	20.2	3.3	9/26/2023	7.0	1.8	50.2	3.3
4/3/2023	<MDC	1.8	20.0	3.3	10/3/2023	8.5	1.8	50.3	3.3
4/10/2023	2.2	1.8	22.2	3.3	10/10/2023	5.7	1.8	31.7	3.3
4/17/2023	1.9	1.8	19.1	3.3	10/17/2023	4.6	1.8	29.9	3.3
5/1/2023	<MDC	1.8	21.7	3.3	10/24/2023	4.2	1.8	37.8	3.3
5/8/2023	<MDC	1.8	12.3	3.3	10/31/2023	<MDC	1.8	23.3	3.3
5/15/2023	<MDC	1.8	13.3	3.3	11/7/2023	6.0	1.8	45.6	3.3
5/22/2023	3.3	1.8	16.9	3.3	11/14/2023	3.6	1.8	32.1	3.3
5/30/2023	2.6	1.8	20.8	3.3	11/21/2023	2.7	1.8	36.3	3.3
6/5/2023	2.2	1.8	24.6	3.3	11/28/2023	2.7	1.8	42.3	3.3
6/12/2023	2.0	1.8	21.9	3.3	12/5/2023	10.3	1.8	40.4	3.3
6/20/2023	2.9	1.8	20.0	3.3	12/12/2023	8.8	1.8	36.3	3.3
6/27/2023	3.7	1.8	17.5	3.3	12/19/2023	6.4	1.8	32.9	3.3
7/4/2023	4.7	1.8	18.7	3.3	12/26/2023	5.0	1.8	31.4	3.3

Table B.5 Sample Results for Alpha / Beta Screening of Air Particulate Filters  
 Airport Road  
 Results are in femtocuries per cubic meter (fCi/m<sup>3</sup>)

Location	Alpha		Beta		Location	Alpha		Beta	
Date	Result	MDC	Result	MDC	Date	Result	MDC	Result	MDC
<b>Airport Road</b>					<b>Airport Road</b>				
1/3/2023	4.8	1.8	24.9	3.3	7/18/2023	6.8	1.8	25.1	3.3
1/10/2023	3.7	1.8	23.1	3.3	7/25/2023	4.6	1.8	21.3	3.3
1/17/2023	4.8	1.8	29.9	3.3	8/1/2023	9.1	1.8	33.0	3.3
1/24/2023	3.3	1.8	24.2	3.3	8/8/2023	6.1	1.8	24.0	3.3
1/31/2023	3.6	1.8	20.1	3.3	8/15/2023	6.7	1.8	22.9	3.3
2/7/2023	3.3	1.8	32.0	3.3	8/22/2023	3.6	1.8	34.7	3.3
2/14/2023	2.0	1.8	21.3	3.3	8/29/2023	3.9	1.8	58.2	3.3
2/21/2023	3.0	1.8	19.6	3.3	9/2/2023	<MDC	1.8	29.6	3.3
2/27/2023	2.2	1.8	17.5	3.3	9/12/2023	4.1	1.8	23.7	3.3
3/13/2023	2.3	1.8	20.1	3.3	9/19/2023	6.7	1.8	40.4	3.3
3/21/2023	2.9	1.8	22.8	3.3	9/26/2023	8.2	1.8	50.6	3.3
4/3/2023	<MDC	1.8	21.3	3.3	10/3/2023	9.4	1.8	53.1	3.3
4/10/2023	2.0	1.8	23.3	3.3	10/10/2023	5.8	1.8	32.7	3.3
4/17/2023	3.3	1.8	19.8	3.3	10/17/2023	5.7	1.8	33.1	3.3
4/25/2023	2.0	1.8	16.6	3.3	10/24/2023	4.8	1.8	36.5	3.3
5/1/2023	2.1	1.8	25.3	3.3	10/31/2023	<MDC	1.8	24.2	3.3
5/22/2023	3.5	1.8	20.4	3.3	11/7/2023	5.4	1.8	44.5	3.3
5/30/2023	3.4	1.8	22.9	3.3	11/14/2023	3.2	1.8	33.9	3.3
6/5/2023	1.8	1.8	29.0	3.3	11/21/2023	2.7	1.8	40.7	3.3
6/12/2023	2.6	1.8	21.2	3.3	11/28/2023	5.6	1.8	44.6	3.3
6/20/2023	5.0	1.8	24.0	3.3	12/5/2023	9.5	1.8	43.2	3.3
6/27/2023	4.2	1.8	23.4	3.3	12/12/2023	7.2	1.8	36.4	3.3
7/4/2023	4.9	1.8	22.8	3.3	12/19/2023	6.1	1.8	31.5	3.3
7/11/2023	3.5	1.8	23.1	3.3	12/26/2023	4.9	1.8	36.5	3.3

Table B.6 Isotopic Uranium Sample Results for Soil Migration Samples  
Results in picocuries per gram (pCi/g)

Location	U-234		U-235		U-238	
	Date	Result	MDC	Result	MDC	Result
<b>Airport 1 Mi. NNE</b>						
5/30/2023	1.22	0.03	0.06	0.03	1.28	0.03
8/18/2023	1.39	0.03	0.09	0.03	1.40	0.03
<b>Intersection of Gurley and Devers</b>						
5/30/2023	1.16	0.03	0.05	0.03	1.26	0.03
8/18/2023	0.92	0.03	0.06	0.03	1.05	0.03
<b>Massac Creek @ Country Club Rd</b>						
5/30/2023	0.71	0.03	0.03	0.03	0.71	0.03
8/18/2023	0.57	0.03	0.03	0.03	0.47	0.03
<b>Nearest Residence</b>						
5/30/2023	2.57	0.03	0.15	0.03	2.73	0.03
8/18/2023	3.25	0.03	0.14	0.03	3.11	0.03

Table B.7 Isotopic Uranium Sample Results for Soil Deposition Samples  
Results in picocuries per gram (pCi/g)

Location	U-234		U-235		U-238	
	Date	Result	MDC	Result	MDC	Result
<b>Airport 1 Mi. NNE</b>						
5/30/2023	1.14	0.02	0.05	0.03	1.34	0.03
8/18/2023	1.13	0.02	0.06	0.03	1.21	0.03
<b>Intersection of Gurley and Devers</b>						
5/30/2023	0.75	0.02	0.07	0.03	1.00	0.03
8/18/2023	0.95	0.02	0.05	0.03	1.16	0.03
<b>Massac Creek @ Country Club Rd</b>						
5/30/2023	0.90	0.02	0.04	0.03	0.92	0.03
8/18/2023	0.86	0.02	0.04	0.03	0.84	0.03
<b>Nearest Residence</b>						
5/30/2023	2.69	0.02	0.13	0.03	2.80	0.03
8/18/2023	3.46	0.02	0.18	0.03	3.81	0.03

Table B.8 Ingrowth, Gamma Spectroscopy Sample Results for Soil Migration Samples  
Results in picocuries per gram (pCi/g)

Location	Ra-226		Th-230	
Date	Result	MDC	Result	MDC
<b>Nearest Residence</b>				
5/30/2023	1.23	0.01	<MDC	0.60
8/18/2023	1.04	0.01	1.59	0.60

Table B.9 Ingrowth, Gamma Spectroscopy Sample Results for Soil Deposition Samples  
Results in picocuries per gram (pCi/g)

Location	Ra-226		Th-230	
Date	Result	MDC	Result	MDC
<b>Nearest Residence</b>				
5/30/2023	1.05	0.02	<MDC	3.30
8/18/2023	0.95	0.02	<MDC	3.30

Table B.10 Isotopic Uranium Sample Results for Sediment Samples  
Results in picocuries per gram (pCi/g)

Location	U-234		U-235		U-238	
Date	Result	MDC	Result	MDC	Result	MDC
<b>Ohio River At Joppa, 4 Mi. Dn S</b>						
5/30/2023	0.76	0.03	<MDC	0.05	0.84	0.02
8/18/2023	0.51	0.03	<MDC	0.05	0.50	0.02
<b>Public Boat Launch near Harrah's Casino</b>						
5/30/2023	0.79	0.03	<MDC	0.05	0.78	0.02
8/18/2023	0.70	0.03	<MDC	0.05	0.58	0.02

Table B.II Isotopic Uranium Sample Results for Vegetation Samples  
 Results in picocuries per gram (pCi/g)

Location Date	U-234		U-235		U-238	
	Result	MDC	Result	MDC	Result	MDC
<b>Airport 1 Mi. NNE</b>						
5/30/2023	0.018	0.003	<MDC	0.003	0.017	0.004
8/18/2023	0.041	0.003	<MDC	0.003	0.036	0.004
<b>Intersection of Gurley and Devers</b>						
5/30/2023	0.004	0.003	<MDC	0.003	0.008	0.004
8/18/2023	0.006	0.003	<MDC	0.003	<MDC	0.004
<b>Massac Creek @ Country Club Rd</b>						
5/30/2023	0.016	0.003	<MDC	0.003	0.014	0.004
8/18/2023	0.109	0.003	0.006	0.003	0.112	0.004
<b>Nearest Residence</b>						
5/30/2023	0.068	0.003	0.004	0.003	0.062	0.004
8/18/2023	0.214	0.003	0.014	0.003	0.208	0.004



Table B.12 Isotopic Uranium Sample Results for Water Samples  
Results in picocuries per gram (pCi/L)

Location Date	U-234		U-235		U-238	
	Result	MDC	Result	MDC	Result	MDC
<b>Massac Creek @ Country Club Rd</b>						
2/14/2023	<MDC	0.3	<MDC	0.3	<MDC	0.2
5/30/2023	<MDC	0.3	<MDC	0.3	<MDC	0.2
8/18/2023	<MDC	0.3	<MDC	0.3	<MDC	0.2
11/15/2023	<MDC	0.3	<MDC	0.3	<MDC	0.2
<b>Ohio River At Joppa, 4 Mi. Dn S</b>						
2/14/2023	0.3	0.3	<MDC	0.3	0.3	0.2
5/30/2023	<MDC	0.3	<MDC	0.3	<MDC	0.2
8/18/2023	<MDC	0.3	<MDC	0.3	<MDC	0.2
11/15/2023	<MDC	0.3	<MDC	0.3	<MDC	0.2
<b>Public Boat Launch near Harrah's Casino</b>						
2/14/2023	<MDC	0.3	<MDC	0.3	<MDC	0.2
5/30/2023	<MDC	0.3	<MDC	0.3	<MDC	0.2
8/18/2023	<MDC	0.3	<MDC	0.3	<MDC	0.2
11/15/2023	<MDC	0.3	<MDC	0.3	<MDC	0.2
<b>PWS (Untreated)</b>						
2/14/2023	0.4	0.3	<MDC	0.3	<MDC	0.2
5/30/2023	0.4	0.3	<MDC	0.3	<MDC	0.2
8/18/2023	0.6	0.3	<MDC	0.3	<MDC	0.2
11/15/2023	0.5	0.3	<MDC	0.3	<MDC	0.2
<b>Small Creek in Fort Massac State Park</b>						
2/14/2023	<MDC	0.3	<MDC	0.3	<MDC	0.2
11/15/2023	<MDC	0.3	<MDC	0.3	<MDC	0.2

Table B.13 Summary of Ambient Gamma Results

Location	Quarter 1 mR/quarter	Quarter 2 mR/quarter	Quarter 3 mR/quarter	Quarter 4 mR/quarter	Annual Exposure mR/year
METR-01	7.7	9.4	10.2	10.0	37.3
METR-02	9.8		8.6	10.1	38.1
METR-03	8.8	8.2	9.1	9.8	35.9
METR-04	6.3	7.9		10.0	32.2
METR-05	6.9	9.1	12.2	11.5	39.7
METR-06	8.1	9.6	13.0	13.9	44.7
METR-16	8.8	11.9	15.9	11.7	48.3
METR-20	6.5	6.8	13.0	9.4	35.6
METR-21	8.9	10.2	12.4	12.2	43.7
METR-22	6.6	8.5	12.9	10.9	38.9
METR-25	2.2	5.2	11.4	8.1	26.8
METR-26	5.6	9.7	14.4	11.7	41.4
METR-27	5.0		9.4	8.2	30.0
METR-28	8.3	11.4	12.2	10.1	42.0
METR-29	4.3	7.6	10.2	12.0	34.0
METR-30	6.5	9.0	13.4	9.9	38.7
METR-31	8.4		14.9	13.9	49.6
METR-33	8.2	9.8	13.6	14.1	45.7

Blanks in the table indicate that the dosimeter was missing at the end of the quarter.

The Annual Dose column is based on averages of all available data.

Quarters estimated to be 91.25 days in length.

## APPENDIX C

### Sample Analysis Results for Samples Collected from Established Background Locations

Table C.1 Sample Results for Alpha / Beta Screening of Air Samples  
Springfield Background Location  
Results are in femtocuries per cubic meter (fCi/m<sup>3</sup>)

Location	Alpha		Beta		Location	Alpha		Beta	
Date	Result	MDC	Result	MDC	Date	Result	MDC	Result	MDC
<b>Knotts Street Air Sampler</b>					<b>Knotts Street Air Sampler</b>				
1/3/2023	4.6	1.3	26.5	2.3	6/27/2023	3.6	1.3	15.3	2.3
1/10/2023	2.1	1.3	9.6	2.3	7/5/2023	5.4	1.3	20.2	2.3
1/17/2023	3.7	1.3	30.3	2.3	7/11/2023	2.3	1.3	17	2.3
1/25/2023	3.1	1.3	24.3	2.3	7/18/2023	4	1.3	26.1	2.3
2/2/2023	1.9	1.3	15.3	2.3	7/26/2023	2.1	1.3	23.6	2.3
2/9/2023	1.8	1.3	13.6	2.3	8/2/2023	2.6	1.3	20.7	2.3
2/16/2023	<MDC	1.3	10.6	2.3	8/9/2023	1.7	1.3	14.8	2.3
2/23/2023	1.4	1.3	17	2.3	8/15/2023	1.9	1.3	17.5	2.3
3/1/2023	<MDC	1.3	16.3	2.3	8/22/2023	1.4	1.3	22.1	2.3
3/7/2023	1.9	1.3	14	2.3	8/29/2023	<MDC	1.3	22.1	2.3
3/14/2023	<MDC	1.3	9.3	2.3	9/6/2023	3	1.3	13.4	2.3
3/21/2023	1.6	1.3	10.8	2.3	9/18/2023	3.3	1.3	20	2.3
3/28/2023	1.6	1.3	16.7	2.3	9/25/2023	4.2	1.3	30.8	2.3
4/4/2023	1.3	1.3	19.9	2.3	10/3/2023	4.9	1.3	38.6	2.3
4/11/2023	3.6	1.3	19.3	2.3	10/11/2023	2	1.3	21.5	2.3
4/18/2023	1.6	1.3	10.7	2.3	10/17/2023	1.9	1.3	16.2	2.3
4/25/2023	<MDC	1.3	13.9	2.3	10/25/2023	<MDC	1.3	12.9	2.3
5/2/2023	1.8	1.3	12.1	2.3	11/1/2023	<MDC	1.3	21	2.3
5/9/2023	1.6	1.3	14.3	2.3	11/7/2023	3.3	1.3	38.1	2.3
5/16/2023	<MDC	1.3	6.7	2.3	11/15/2023	1.6	1.3	23	2.3
5/23/2023	<MDC	1.3	11.1	2.3	11/28/2023	1.5	1.3	21.6	2.3
5/30/2023	3.4	1.3	15.8	2.3	12/6/2023	<MDC	1.3	23.7	2.3
6/6/2023	4.9	1.3	24.2	2.3	12/12/2023	4.9	1.3	26.5	2.3
6/15/2023	3.1	1.3	15.7	2.3	12/19/2023	4	1.3	24.3	2.3
6/21/2023	3.9	1.3	11.7	2.3					

Table C.2 Sample Results for Alpha / Beta Screening of Air Samples  
 Marion Background Location  
 Results are in femtocuries per cubic meter (fCi/m<sup>3</sup>)

Location	Alpha		Beta		Location	Alpha		Beta	
Date	Result	MDC	Result	MDC	Date	Result	MDC	Result	MDC
<b>Marion Office</b>					<b>Marion Office</b>				
1/3/2023	4.9	1.3	28.3	2.3	6/5/2023	2.5	1.3	30.1	2.3
1/10/2023	4.6	1.3	22.4	2.3	6/12/2023	3	1.3	24.1	2.3
1/17/2023	4.1	1.3	31.2	2.3	6/20/2023	3.2	1.3	20.5	2.3
1/24/2023	2.6	1.3	22.8	2.3	6/27/2023	3.5	1.3	19.9	2.3
2/1/2023	1.4	1.3	20	2.3	7/13/2023	4	1.3	18.9	2.3
2/7/2023	2.2	1.3	29	2.3	7/20/2023	2.4	1.3	17	2.3
2/14/2023	1.9	1.3	20.5	2.3	7/27/2023	3.9	1.3	26.4	2.3
2/21/2023	2.1	1.3	18.6	2.3	8/10/2023	2	1.3	13.4	2.3
2/27/2023	<MDC	1.3	15.8	2.3	8/17/2023	2.9	1.3	14.2	2.3
3/6/2023	<MDC	1.3	20	2.3	8/31/2023	6.6	1.3	30	2.3
3/13/2023	2	1.3	15.4	2.3	9/21/2023	3.8	1.3	20.2	2.3
3/21/2023	2.4	1.3	21.1	2.3	9/28/2023	4.3	1.3	43.1	2.3
4/3/2023	1.3	1.3	18.9	2.3	10/17/2023	2.6	1.3	27.8	2.3
4/10/2023	1.4	1.3	23.8	2.3	10/26/2023	3.7	1.3	29	2.3
4/17/2023	2.9	1.3	17.8	2.3	11/2/2023	1.8	1.3	18.6	2.3
4/25/2023	2.2	1.3	15.5	2.3	11/9/2023	5	1.3	38.7	2.3
5/1/2023	2.5	1.3	26.3	2.3	11/15/2023	3.4	1.3	27.9	2.3
5/8/2023	1.7	1.3	15.4	2.3	11/22/2023	2.6	1.3	29.6	2.3
5/15/2023	<MDC	1.3	14.2	2.3	11/30/2023	1.4	1.3	30.9	2.3
5/22/2023	2.9	1.3	18.4	2.3	12/7/2023	<MDC	1.3	30.5	2.3
5/30/2023	2.8	1.3	23.4	2.3	12/20/2023	4.4	1.3	24.3	2.3

Table C.3 Sample Results for Alpha / Beta Screening of Air Samples  
 West Chicago Background Location  
 Results are in femtocuries per cubic meter (fCi/m<sup>3</sup>)

Location	Alpha		Beta		Location	Alpha		Beta	
Date	Result	MDC	Result	MDC	Date	Result	MDC	Result	MDC
<b>West Chicago</b>					<b>West Chicago</b>				
1/3/2023	5.7	1.3	31.7	2.5	6/29/2023	10.2	1.3	19.2	2.5
1/10/2023	3.0	1.3	17.6	2.5	7/6/2023	5.7	1.3	28.9	2.5
1/17/2023	4.6	1.3	32.2	2.5	7/11/2023	2.1	1.3	19.9	2.5
1/23/2023	2.3	1.3	16.5	2.5	7/18/2023	2.8	1.3	17.5	2.5
1/31/2023	3.5	1.3	27.8	2.5	7/26/2023	2.6	1.3	20.6	2.5
2/7/2023	2.9	1.3	32.0	2.5	8/1/2023	1.4	1.3	21.5	2.5
2/14/2023	2.1	1.3	18.6	2.5	8/9/2023	5.8	1.3	20.0	2.5
2/21/2023	2.0	1.3	18.8	2.5	8/15/2023	6.0	1.3	18.3	2.5
2/28/2023	2.0	1.3	16.3	2.5	8/22/2023	3.8	1.3	18.6	2.5
3/7/2023	2.4	1.3	18.8	2.5	8/29/2023	7.2	1.3	35.1	2.5
3/15/2023	1.7	1.3	14.6	2.5	9/12/2023	2.1	1.3	14.0	2.5
3/23/2023	2.0	1.3	22.8	2.5	9/19/2023	4.2	1.3	23.5	2.5
3/28/2023	2.1	1.3	27.1	2.5	9/26/2023	6.6	1.3	34.3	2.5
4/4/2023	1.6	1.3	22.5	2.5	10/17/2023	3.1	1.3	18.7	2.5
4/11/2023	5.4	1.3	27.3	2.5	10/24/2023	2.1	1.3	26.0	2.5
4/18/2023	2.5	1.3	14.5	2.5	10/31/2023	4.2	1.3	26.3	2.5
4/25/2023	2.0	1.3	13.1	2.5	11/7/2023	4.7	1.3	38.5	2.5
5/2/2023	<MDC	1.3	12.3	2.5	11/15/2023	2.6	1.3	20.8	2.5
5/9/2023	<MDC	1.3	13.5	2.5	11/21/2023	2.1	1.3	28.0	2.5
5/16/2023	3.7	1.3	18.7	2.5	11/28/2023	5.3	1.3	19.8	2.5
5/23/2023	3.0	1.3	14.9	2.5	12/6/2023	4.5	1.3	23.4	2.5
5/30/2023	3.5	1.3	16.1	2.5	12/11/2023	5.0	1.3	29.2	2.5
6/6/2023	6.2	1.3	21.7	2.5	12/19/2023	3.9	1.3	23.9	2.5
6/15/2023	4.7	1.3	10.9	2.5	12/27/2023	2.9	1.3	24.1	2.5
6/22/2023	4.7	1.3	18.9	2.5					

Table C.4 Isotopic Uranium Soil Migration Samples  
 Kincaid, Illinois Background Locations  
 Results are in picocuries per gram (pCi/g)

Location	U-234		U-235		U-238		
	Date	Result	MDC	Result	MDC	Result	MDC
<b>East Boat Dock</b>							
5/23/2023	0.92	0.03	0.06	0.03	1.00	0.04	
8/28/2023	1.06	0.03	0.08	0.03	1.03	0.04	
<b>Strawkaws Boat Ramp</b>							
5/23/2023	1.10	0.03	0.05	0.03	1.04	0.04	
8/28/2023	0.94	0.03	0.08	0.03	0.97	0.04	
<b>West Boat Ramp</b>							
5/23/2023	1.05	0.03	0.06	0.03	1.02	0.04	
8/28/2023	0.84	0.03	0.07	0.03	0.91	0.04	

Table C.5 Isotopic Uranium Soil Deposition Samples  
 Kincaid, Illinois Background Locations  
 Results are in picocuries per gram (pCi/g)

Location	U-234		U-235		U-238		
	Date	Result	MDC	Result	MDC	Result	MDC
<b>East Boat Dock</b>							
5/23/2023	0.98	0.03	0.05	0.04	1.06	0.04	
8/28/2023	1.10	0.03	0.09	0.04	1.11	0.04	
<b>Strawkaws Boat Ramp</b>							
5/23/2023	0.98	0.03	0.06	0.04	0.98	0.04	
8/28/2023	0.89	0.03	0.06	0.04	0.99	0.04	
<b>West Boat Ramp</b>							
5/23/2023	1.03	0.03	0.05	0.04	1.03	0.04	
8/28/2023	1.06	0.03	<MDC	0.04	1.03	0.04	

Table C.6 Ingrowth, Gamma Spectroscopy Soil Migration Samples  
 Kincaid, Illinois Background Locations  
 Results are in picocuries per gram (pCi/g)

Location Date	Ra-226		Th-230	
	Result	MDC	Result	MDC
<b>West Boat Ramp</b>				
5/23/2023	1.12	0.02	<MDC	3.30
8/28/2023	1.00	0.02	<MDC	3.30

Table C.7 Ingrowth, Gamma Spectroscopy Soil deposition Samples  
 Kincaid, Illinois Background Locations  
 Results are in picocuries per gram (pCi/g)

Location Date	Ra-226		Th-230	
	Result	MDC	Result	MDC
<b>West Boat Ramp</b>				
5/23/2023	1.01	0.02	<MDC	1.49
8/28/2023	0.86	0.02	<MDC	1.49

Table C.8 Isotopic Uranium Sample Results for Sediment Samples  
 Kincaid, Illinois Background Locations  
 Results are in picocuries per gram (pCi/g)

Location Date	U-234		U-235		U-238	
	Result	MDC	Result	MDC	Result	MDC
<b>Strawkaws Boat Ramp</b>						
5/23/2023	0.31	0.24	<MDC	0.15	<MDC	0.24
8/28/2023	0.48	0.24	<MDC	0.15	0.48	0.24
<b>West Boat Ramp</b>						
5/23/2023	0.78	0.24	<MDC	0.15	0.72	0.24
8/28/2023	0.55	0.24	<MDC	0.15	0.59	0.24

Table C.9 Isotopic Uranium Vegetation Samples  
 Kincaid, Illinois Background Locations  
 Results are in picocuries per gram (pCi/g)

Location	U-234		U-235		U-238		
	Date	Result	MDC	Result	MDC	Result	MDC
<b>East Boat Dock</b>							
	5/23/2023	<MDC	0.01	<MDC	0.01	<MDC	0.01
	8/28/2023	0.02	0.01	<MDC	0.01	0.02	0.01
<b>Strawkaws Boat Ramp</b>							
	5/23/2023	<MDC	0.01	<MDC	0.01	<MDC	0.01
	8/28/2023	<MDC	0.01	<MDC	0.01	<MDC	0.01
<b>West Boat Ramp</b>							
	5/23/2023	0.03	0.01	<MDC	0.01	0.02	0.01
	8/28/2023	<MDC	0.01	<MDC	0.01	<MDC	0.01

Table C.10 Isotopic Uranium Sample Results for Water Samples  
 Kincaid, Illinois Background Locations  
 Results are in picocuries per gram (pCi/L)

Location	U-234		U-235		U-238		
	Date	Result	MDC	Result	MDC	Result	MDC
<b>East Boat Dock</b>							
	3/2/2023	0.5	0.2	<MDC	0.1	0.2	0.2
	5/23/2023	0.4	0.2	<MDC	0.1	0.3	0.2
	8/28/2023	0.3	0.2	<MDC	0.1	<MDC	0.2
	10/30/2023	0.2	0.2	<MDC	0.1	0.3	0.2
<b>Strawkaws Boat Ramp</b>							
	3/2/2023	0.3	0.2	<MDC	0.1	0.3	0.2
	5/23/2023	0.3	0.2	<MDC	0.1	<MDC	0.2
	8/28/2023	<MDC	0.2	<MDC	0.1	0.3	0.2
	10/30/2023	0.4	0.2	<MDC	0.1	0.2	0.2
<b>West Boat Ramp</b>							
	3/2/2023	0.4	0.2	<MDC	0.1	0.3	0.2
	5/23/2023	0.3	0.2	<MDC	0.1	0.2	0.2
	8/28/2023	0.3	0.2	<MDC	0.1	<MDC	0.2
	10/30/2023	0.5	0.2	<MDC	0.1	0.3	0.2



Table C.II Summary of Ambient Gamma Results  
Kincaid, Illinois Background Locations

Location	Quarter 1 mR/quarter	Quarter 2 mR/quarter	Quarter 3 mR/quarter	Quarter 4 mR/quarter	Annual exposure mR/year
KC-01	11.2	8.5	9.3	13.9	42.9
KC-02	8.6	9.2			35.5
KC-03	10.6	8.8			38.8
KC-04	7.5	9.9	15.1	13.9	46.4
KC-05	7.6	10.9	12.3	12.0	42.7
KC-06	12.0	10.7	11.8	13.0	47.5
KC-07	7.2	8.2	9.5	13.4	38.2
KC-08	11.3	10.6	9.1		41.4
KC-09	9.3	10.4	8.9	13.2	41.7
KC-10	7.5	11.9	7.0	15.6	42.0
KC-11	10.5	11.7	12.1	15.0	49.2
KC-12	11.1	10.5	9.9	14.1	45.5
KC-13		12.9	10.3	16.1	52.3
KC-14	12.0		11.0	14.8	50.4
KC-15	10.2	7.8	10.3	10.9	39.2

Blanks in the table indicate that the dosimeter was missing at the end of the quarter.  
The Annual Dose column is based on averages of all available data.  
Quarters estimated to be 91.25 days in length.

ILLINOIS EMERGENCY MANAGEMENT AGENCY AND OFFICE OF HOMELAND SECURITY  
1301 KNOTTS STREET | SPRINGFIELD, ILLINOIS 62703 | 217-782-2700  
[iemaohs.illinois.gov](http://iemaohs.illinois.gov) | [ready.illinois.gov](http://ready.illinois.gov)